

Repossi
macchine agricole

SPARE PARTS CATALOGUE

COMB RAKE

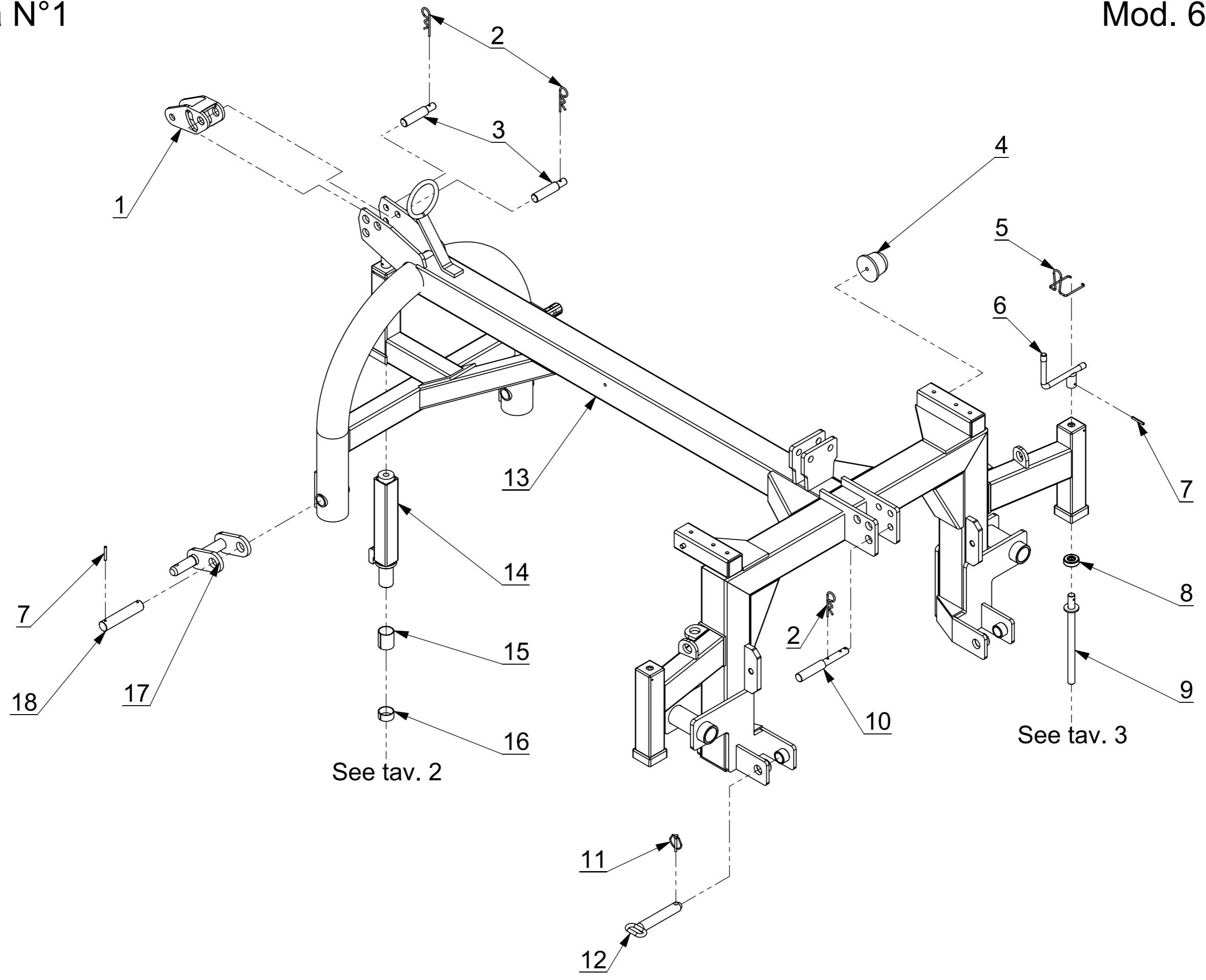
mod. **6000FP**

Repossi Macchine agricole s.r.l.

Via V. Emanuele II, 40 - 27022 Casorate Primo (PV) - Italia

Tel. **39 02 905 66 25 - Fax **39 02 905 13 08

e-mail: info@repossi.it - Web: www.repossi.it

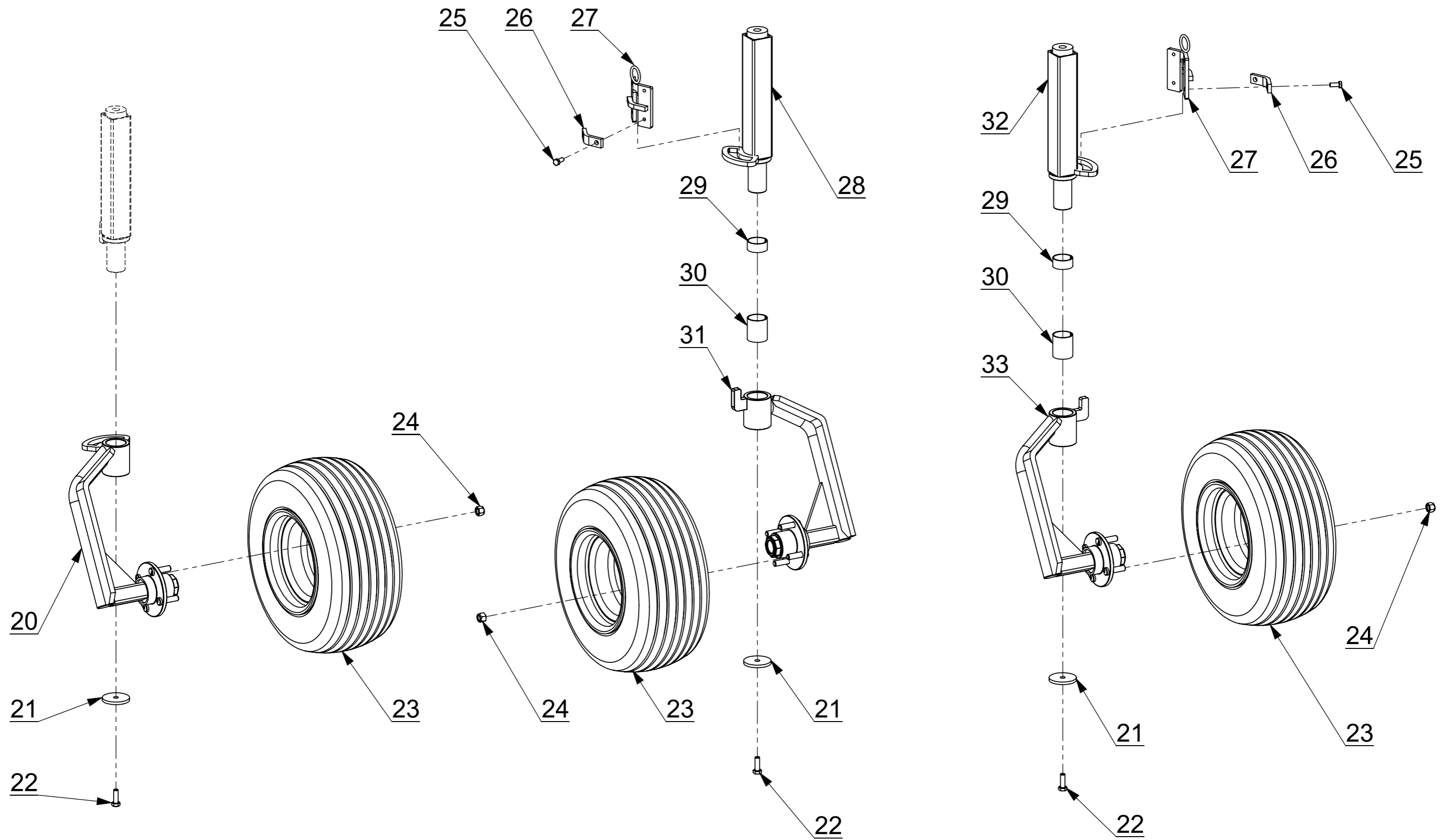


| Pos. | Cod. pezzo | Descrizione |
|-------------|-------------------|---|
| 1 | 09.00.1351.00 | Third point articulation |
| 2 | 03.05.0004.00 | B cotter ϕ 4 |
| 3 | 09.00.1352.00 | 3° point pin |
| 4 | 03.10.8060.12 | M12 bumper |
| 5 | 01.15.1149.02 | Locking handle spring |
| 6 | 01.15.1149.01 | Height adjustment handle |
| 7 | 03.11.0645.01 | Elastic pin 6x45 |
| 8 | 01.15.1149.04 | Thrust bearing for foot |
| 9 | 01.15.1149.03 | Swivelling wheel height adjustment screw |
| 10 | 09.00.1434.00 | Third point pin |
| 11 | 03.04.0010.00 | Plug snap ϕ 10 |
| 12 | 09.00.1901.00 | Lifter pin |
| 13,1 | 09.00.1900.00 | Main frame |
| 13,2 | 09.00.1970.00 | Special larger main frame |
| 14 | 09.04.1149.00 | Internal foot with limited rotation and ϕ 35 pin |
| 15 | 03.15.4020.00 | Sintered bush 40x44x20 |
| 16 | 03.15.4050.00 | Sintered bush 40x44x50 |
| 17 | 09.00.1503.00 | Power lift attachment |
| 18 | 09.00.1502.00 | Power lift pin |

Tavola N°2

18.5 x 8.5 - 8 Wheels version

Mod. 6000 FP

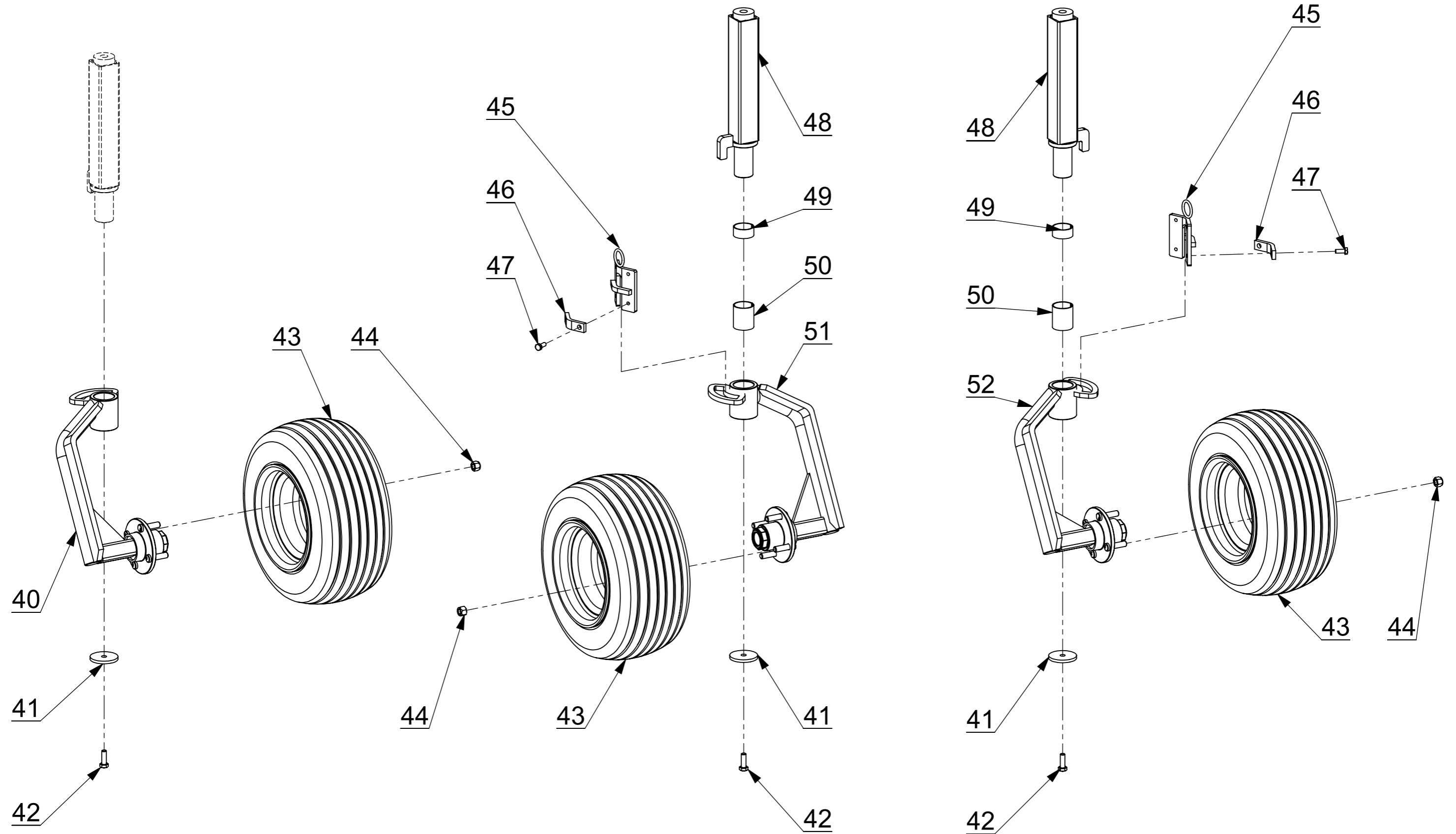


| Pos. | Cod. pezzo | Descrizione |
|-------------|-------------------|--|
| 20 | 09.00.2402.06 | Front swiveling wheel fork with limited rotation (18,5x8.5-8 wheel) |
| 21 | 03.07.1160.00 | Washer 11x60x6 |
| 22 | 07.07.1030.04 | Hexagonal head screw 10x30 8.8 uni 5739 |
| 23 | 01.06.1808.40 | Complete wheel 18,5x8.50-8 with 4 holes FIAT rim |
| 23,1 | 01.06.1808.01 | Tire 18,5x8.50-8 |
| 23,2 | 01.06.1808.02 | Inner tube for wheel 18.5x6.50-8 |
| 23,3 | 01.06.1808.03 | 4 hole rim for wheel 18,5x8.50-8 |
| 24 | 01.08.1215.00 | Wheel nut M12 |
| 25 | 07.07.0820.05 | Hexagonal head screw 8x20 8.8 uni 5739 zinc plated |
| 26 | 09.00.1910.00 | Wheel locks fixing plate |
| 27 | 09.00.1909.00 | Swivel wheels locking |
| 28 | 09.04.1149.06 | Internal left foot with limited rotation and ø40 pin |
| 29 | 03.15.4020.00 | Sintered bush 40x44x20 |
| 30 | 03.15.4050.00 | Sintered bush 40x44x50 |
| 31 | 09.00.2402.08 | Rear left swiveling wheel fork with limited rotation (18,5x8.5-8 wheel) |
| 32 | 09.04.1149.05 | Internal right foot with limited rotation and ø40 pin |
| 33 | 09.00.2402.07 | Rear right swiveling wheel fork with limited rotation (18,5x8.5-8 wheel) |

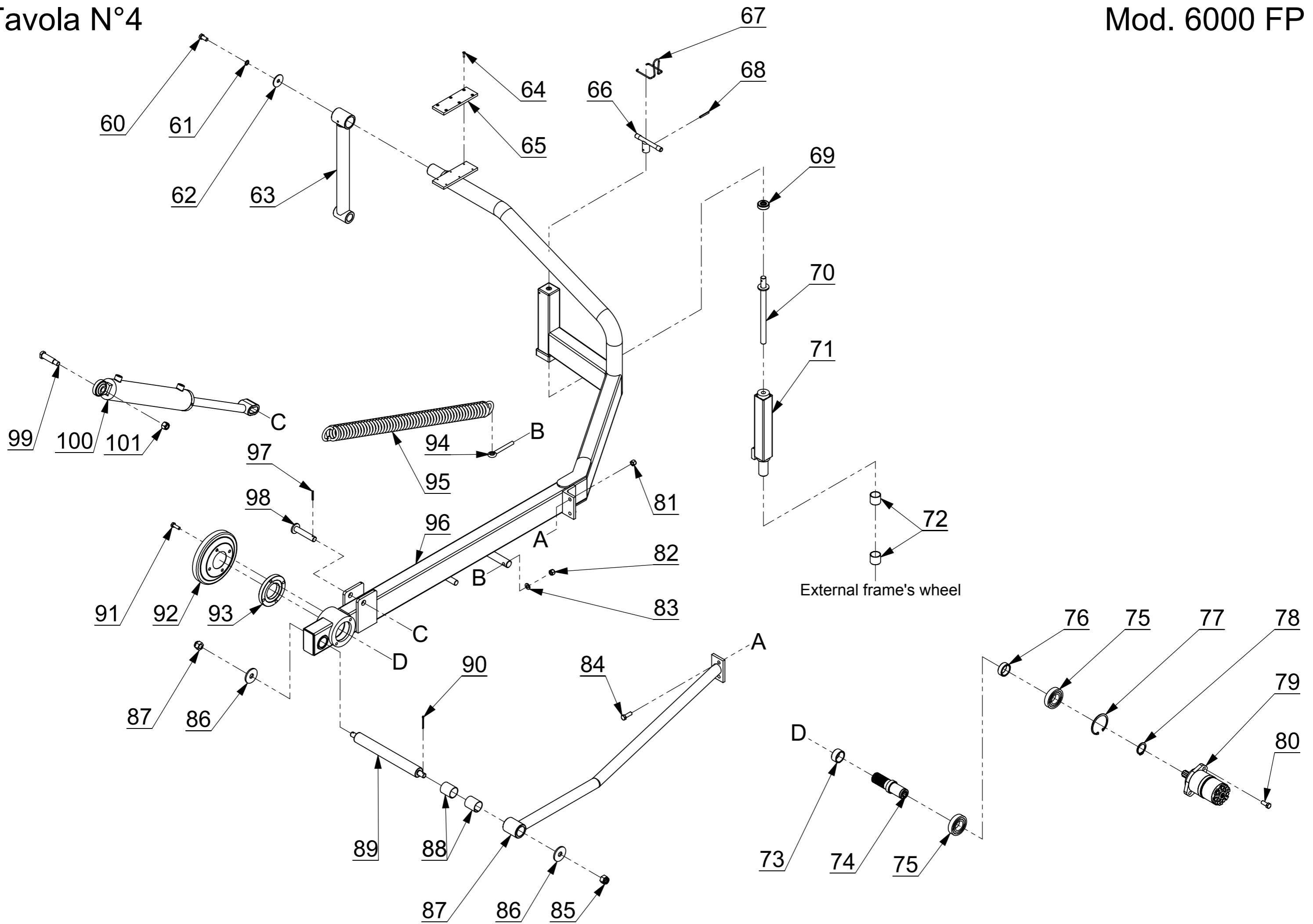
Tavola N°3

16.5 x 6.5 - 8 Wheels version

Mod. 6000 FP

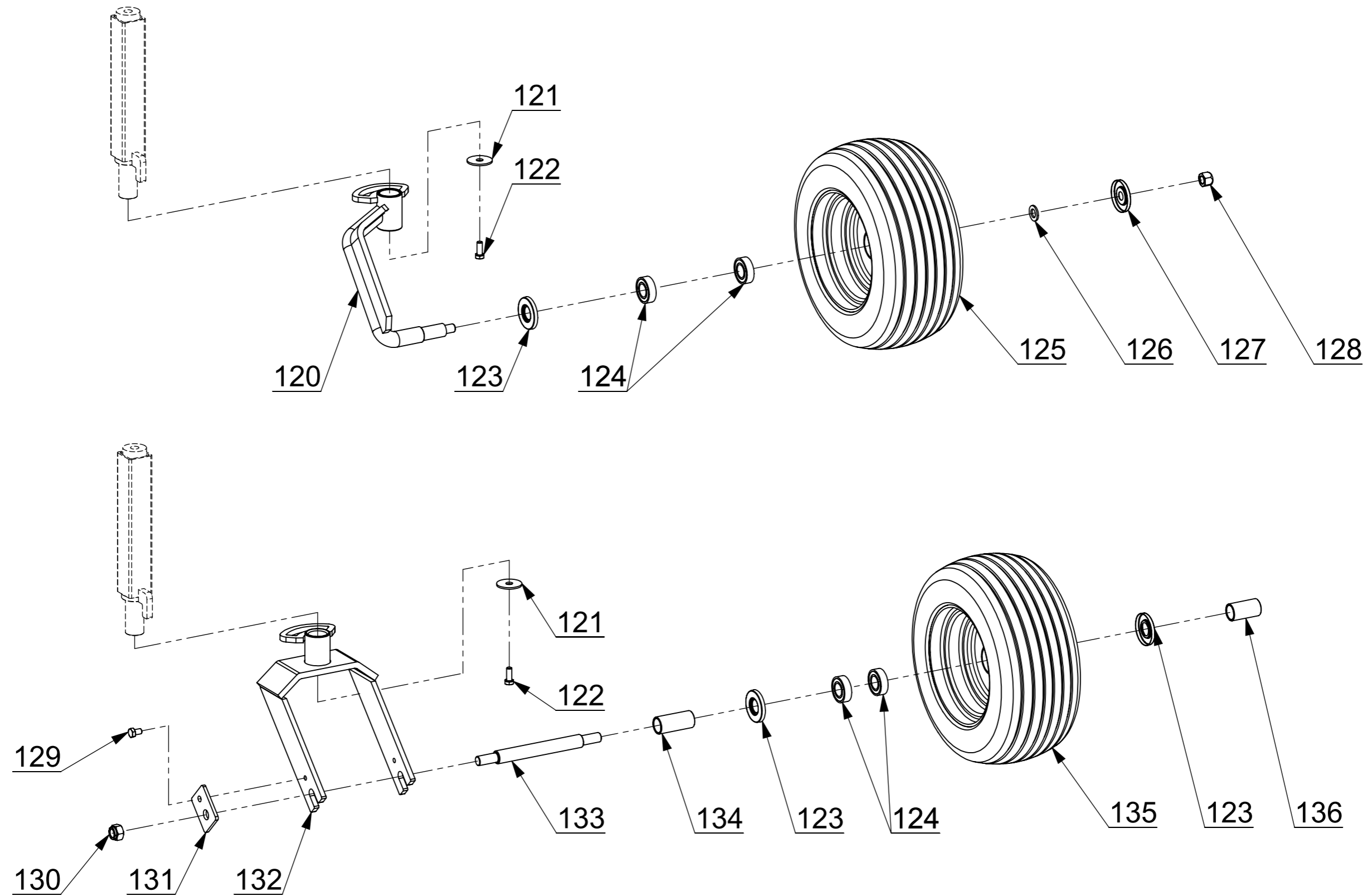


| Pos. | Cod. pezzo | Descrizione |
|-------------|-------------------|--|
| 40 | 09.00.2402.01 | Front swiveling wheel fork with limited rotation (16x6.5-8 wheel) |
| 41 | 03.07.1160.00 | Washer 11x60x6 |
| 42 | 07.07.1030.04 | Hexagonal head screw 10x30 8.8 uni 5739 |
| 43 | 01.06.1608.04 | Complete wheel 16x6.50-8 with 4 holes FIAT rim |
| 43,1 | 01.06.1608.01 | Tire 16x6.50-8 |
| 43,2 | 01.06.1608.02 | Inner tube for wheel 16x6.50-8 |
| 43,3 | 01.06.1608.03 | 4 hole rim for wheel 16x6.50-8 |
| 44 | 01.08.1215.00 | Wheel nut M12 |
| 45 | 09.00.1909.00 | Swivel wheels locking |
| 46 | 09.00.1910.00 | Wheel locks fixing plate |
| 47 | 07.07.0820.05 | Hexagonal head screw 8x20 8.8 uni 5739 zinc plated |
| 48 | 09.04.1149.01 | Internal foot with limited rotation and increased pin |
| 49 | 03.15.4020.00 | Sintered bush 40x44x20 |
| 50 | 03.15.4050.00 | Sintered bush 40x44x50 |
| 51 | 09.00.2402.03 | Rear left swiveling wheel fork with limited rotation (16x6.5-8 wheel) |
| 52 | 09.00.2402.02 | Rear right swiveling wheel fork with limited rotation (16x6.5-8 wheel) |

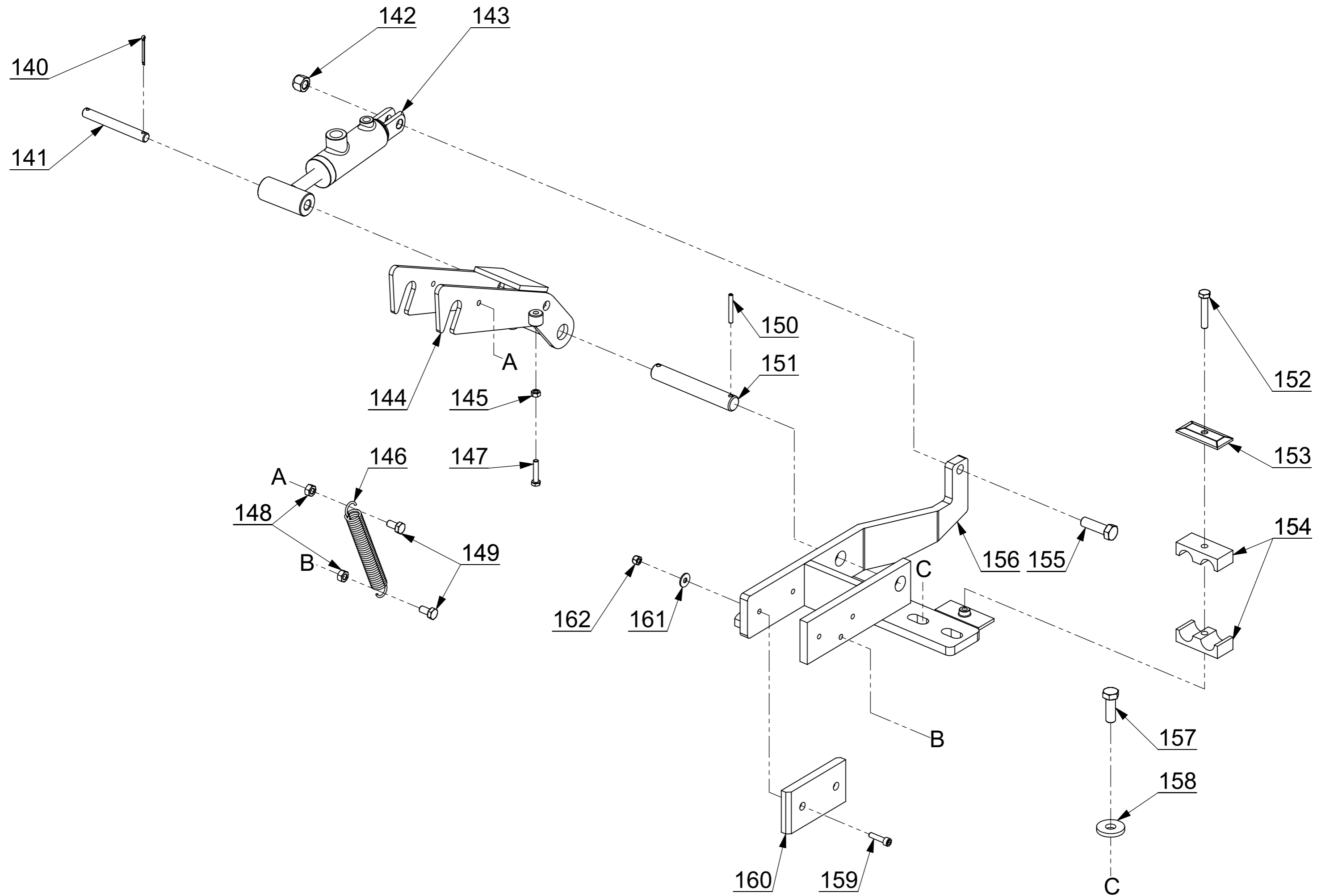


| Pos. | Cod. pezzo | Descrizione |
|------|---------------|---|
| 60 | 07.07.1225.04 | Hexagonal head screw 12x25 8.8 uni 5739 |
| 61 | 03.08.0012.03 | Lock washer ø12 DIN 6798j zinc plated |
| 62 | 03.07.1350.00 | Washer 13x50x3 |
| 63 | 09.00.0099.00 | Straigth arm |
| 64 | 07.09.0520.00 | Flathead screw 5x20 UNI 7688 zinc plated |
| 65 | 01.99.3627.00 | Rubber buffer |
| 66 | 01.15.1149.01 | Height adjustment handle |
| 67 | 01.15.1149.02 | Locking handle spring |
| 68 | 03.11.0645.01 | Elastic pin 6x45 |
| 69 | 01.15.1149.04 | Thrust bearing for foot |
| 70 | 01.15.1149.03 | Swivelling wheel height adjustment screw |
| 71 | 09.04.1149.00 | Internal foot with limited rotation and ø35 pin |
| 72 | 03.15.3535.00 | Sintered bush 35x39x35 |
| 73 | 09.00.0482.00 | External spacer 50x40x25 |
| 74 | 09.00.0481.01 | Crosswise center shaft for oleodinamic engine |
| 75 | 03.03.6208.00 | Bearing 6208 - 40x80x18 |
| 76 | 09.00.0484.09 | Internal spacer 50x40x18 |
| 77 | 03.09.0080.01 | Snap ring 80i |
| 78 | 03.09.0040.00 | Snap ring 40e |
| 79 | 04.01.0315.00 | Oleodinamic engine 315cc |
| 79,1 | 04.01.0001.90 | Oleodinamic engine gasket kit (epm - omp) |
| 80 | 07.07.1230.04 | Hexagonal head screw 12x30 8.8 uni 5739 |
| 81 | 07.02.0012.01 | Self-locking nut M 12 |
| 82 | 07.01.0012.05 | Nut M12 UNI 5588 zincplated |
| 83 | 03.06.1324.01 | Washer ø12 UNI 6592 (13x24x2.5) |

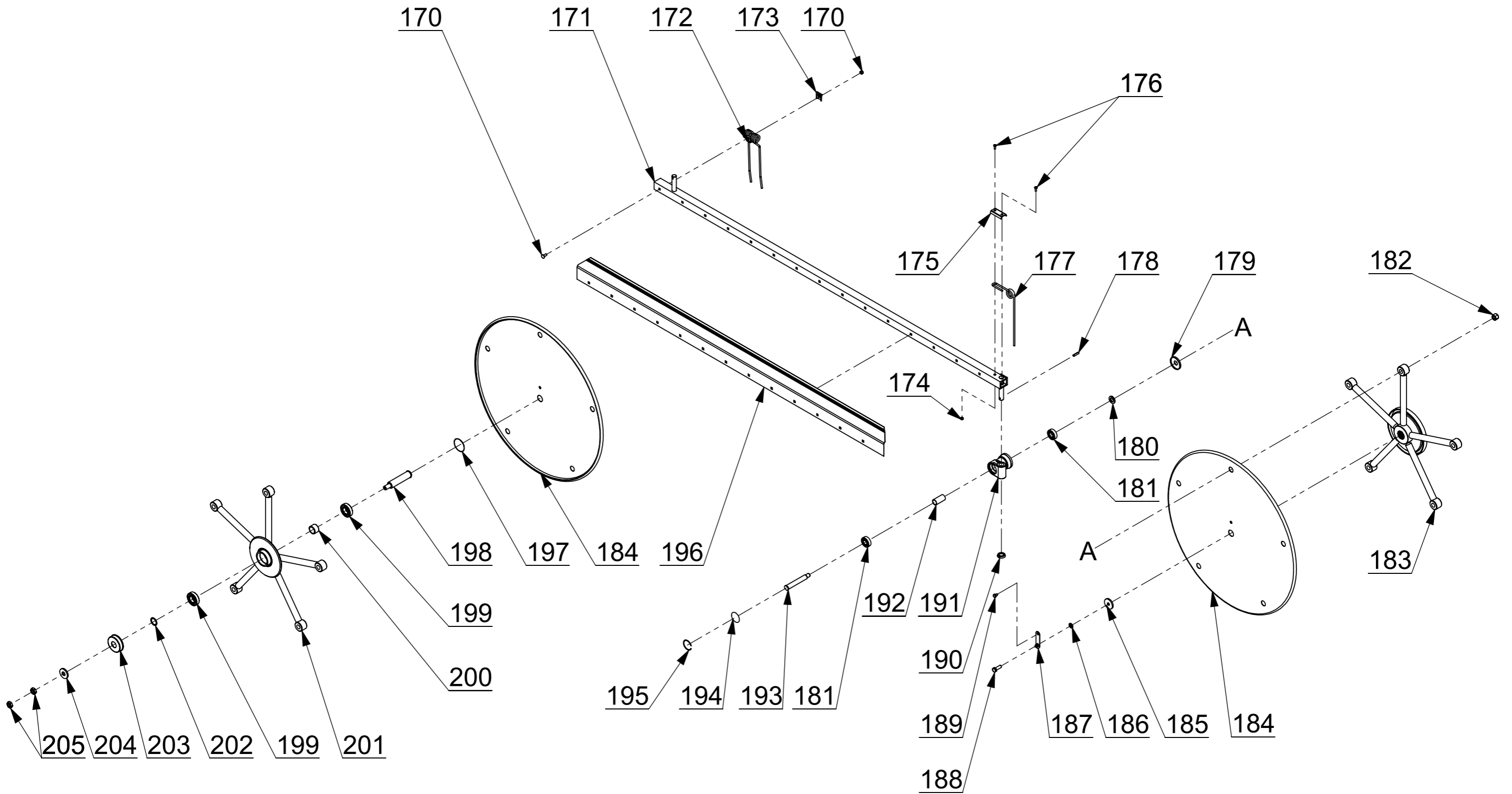
| | | |
|-------|---------------|---|
| 84 | 07.07.1235.04 | Hexagonal head screw 12x35 8.8 uni 5739 |
| 85 | 07.01.0018.08 | Castle nut M18 UNI 5594 |
| 86 | 03.07.1960.00 | Washer 19x60x5 |
| 87 | 09.00.1903.00 | Rear reinforcement |
| 88 | 03.15.4050.00 | Sintered bush 40x44x50 |
| 89 | 03.02.4060.01 | Split pin 4x60 UNI1336 zinc plated |
| 89 | 09.00.1902.03 | Rake hinged joint pin |
| 91 | 07.07.1030.04 | Hexagonal head screw 10x30 8.8 uni 5739 |
| 92 | 06.03.0052.04 | Crosswise protection cap with 4 holes |
| 93 | 02.01.1056.00 | Aluminum flange |
| 94 | 01.16.0010.05 | Eye tie rod M10 |
| 95 | 03.05.1908.00 | Raking group spring |
| 96,1 | 09.00.1902.00 | Right standard raking group frame (13 theeth) |
| 96,2 | 09.00.1902.10 | Left standard raking group frame (13 theeth) |
| 96,3 | 09.00.1902.06 | Right BIG raking group frame (15 theeth) wheel 16x6.5-8 |
| 96,4 | 09.00.1902.02 | Right BIG raking group frame (15 theeth) wheel 18,5x8.5-8 |
| 96,5 | 09.00.1902.60 | Left BIG raking group frame (15 theeth) wheel 16x6.5-8 |
| 96,6 | 09.00.1902.20 | Left BIG raking group frame (15 theeth) wheel 18,5x8.5-8 |
| 97 | 03.11.0540.00 | Elastic pin 5x40 |
| 98 | 09.00.1165.00 | Cylinder and drawbar pin |
| 99 | 09.00.1130.00 | Cylinder pin |
| 100 | 04.09.0017.02 | Double effect cylinder for raking group |
| 100,1 | 04.09.0003.90 | Cylinder gasket kit |
| 101 | 07.02.0016.01 | Self-locking nut M 16 |



| Pos. | Cod. pezzo | Descrizione |
|-------------|-------------------|--|
| 120 | 09.00.3004.00 | Swiveling wheels fork with limited rotation |
| 121 | 03.07.1348.00 | Washer 13x48x3 |
| 122 | 07.07.1025.04 | Hexagonal head screw 10x25 8.8 uni 5739 |
| 123 | 01.06.0025.00 | Internal cap |
| 124 | 03.03.6205.00 | Bearing 6205 - 25x52x15 |
| 125 | 01.06.1506.00 | Complete wheel 15x6.00-6 |
| 125,1 | 01.06.1506.01 | Tire 15x6.00-6 |
| 125,2 | 01.06.1506.02 | Inner tube for wheel 15x6.00-6 |
| 125,3 | 01.06.1608.00 | Complete wheel 16x6.50-8 |
| 125,4 | 01.06.1608.01 | Tire 16x6.50-8 |
| 125,5 | 01.06.1608.02 | Inner tube for wheel 16x6.50-8 |
| 126 | 03.06.1730.00 | Washer 17x30x3 |
| 127 | 01.06.0016.00 | External cap |
| 128 | 07.02.0018.01 | Self-locking nut M 18 |
| 129 | 07.07.1016.04 | Hexagonal head screw 10x16 8.8 uni 5739 |
| 130 | 07.02.0018.01 | Self-locking nut M 18 |
| 131 | 09.00.1957.00 | Fork pin fixing plate for 16x6.50-8 wheel |
| 132 | 09.00.3566.00 | Wheel fork for 16x6.50-8 wheel with bushing ø 35 |
| 133 | 09.00.1954.00 | Fork wheel pin for 16x6.50-8 wheel |
| 134 | 09.00.1956.00 | Short spacer for wheel 16x6.50-8 fork |
| 135 | 01.06.1608.00 | Complete wheel 16x6.50-8 |
| 135,1 | 01.06.1608.01 | Tire 16x6.50-8 |
| 135,2 | 01.06.1608.02 | Inner tube for wheel 16x6.50-8 |
| 136 | 09.00.1955.00 | Long spacer for wheel 16x6.50-8 fork |

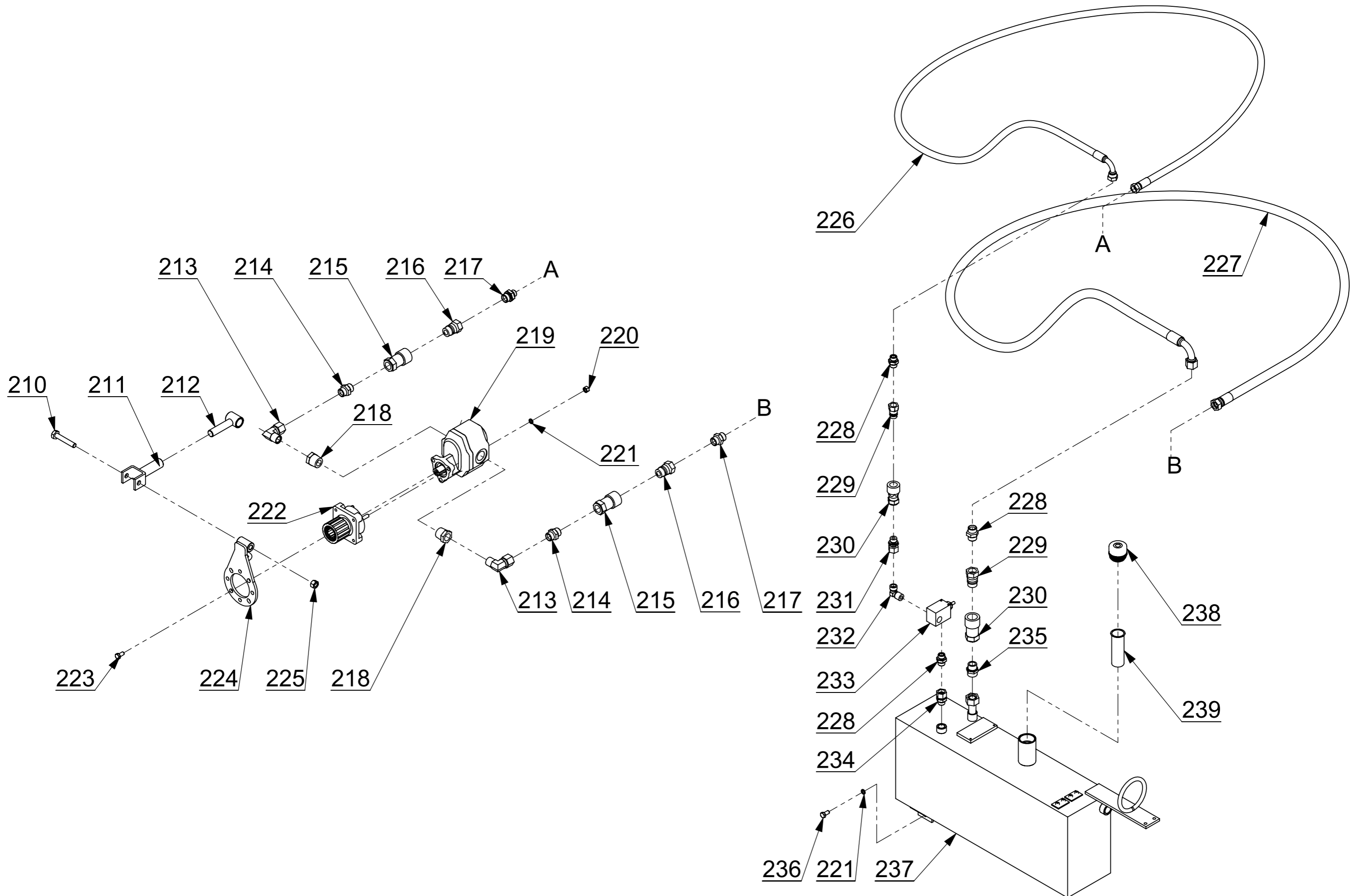


| Pos. | Cod. pezzo | Descrizione |
|-------------|-------------------|---|
| 140 | 03.02.3030.01 | Split pin 3x30 UNI1336 zinc plated |
| 141 | 09.00.3559.00 | Connecting pin |
| 142 | 07.02.0012.01 | Self-locking nut M 12 |
| 143 | 04.09.0026.01 | Simple effect cylinder for safety hook |
| 144 | 09.00.3551.00 | Safety hook |
| 145 | 07.01.0006.05 | Nut M6 UNI 5588 zinc plated |
| 146 | 03.05.0347.00 | Return spring |
| 147 | 07.07.0620.05 | Hexagonal head screw 6x20 uni 5739 zinc plated |
| 148 | 07.01.0008.05 | Nut M8 UNI 5588 zinc plated |
| 149 | 07.07.0816.05 | Hexagonal head screw 8x16 8.8 uni 5739 zinc plated |
| 150 | 03.11.0540.00 | Elastic pin 5x40 |
| 151 | 09.00.3564.00 | Safety hook connecting pin |
| 152 | 07.07.0845.02 | Hexagonal head screw 8x45 8.8 uni 5737 zinc plated |
| 153 | 04.07.2020.01 | Upper CF3 plate (20-20 and 22-22) zinc plated |
| 154 | 04.07.2222.00 | Hold pipe collar CF3 22-22 |
| 155 | 07.07.1240.01 | Hexagonal head screw 12x40 8.8 uni 5739 |
| 156,1 | 09.00.3621.00 | Right safety hook support |
| 156,2 | 09.00.3621.01 | Left safety hook support |
| 157 | 07.07.1235.05 | Hexagonal head screw 12x35 8.8 uni 5739 zinc plated |
| 158 | 03.07.1235.01 | Washer 12,5x35x5 zinc plated |
| 159 | 07.03.0625.02 | Socket head screw 6x25 UNI 5931 zinc plated |
| 160 | 01.14.3552.00 | Derling plate |
| 161 | 03.06.0618.01 | Washer ø 6 UNI 6593 (6,2x18x1,6) zinc plated |
| 162 | 07.02.0006.01 | Self-locking nut M 6 |



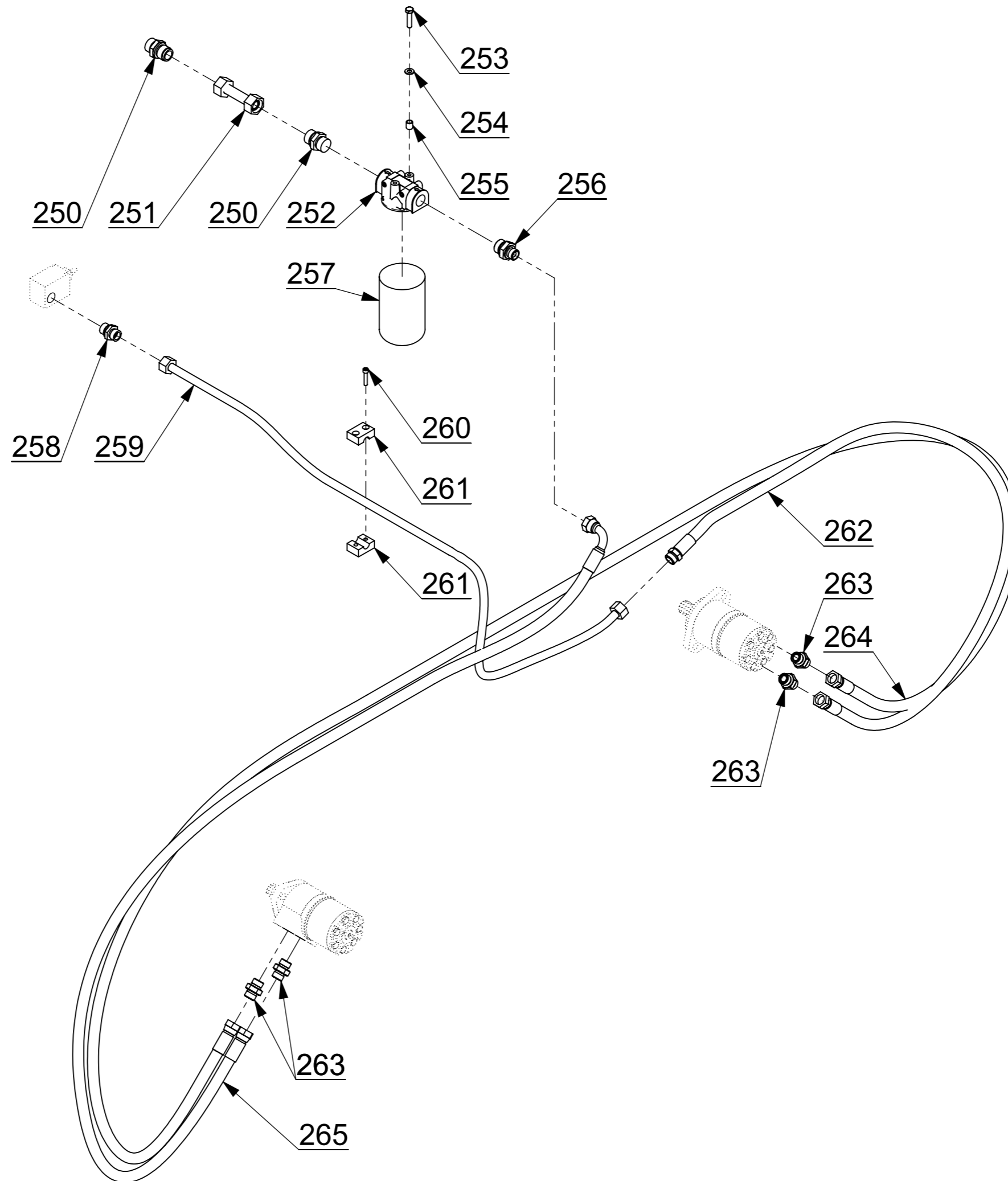
| Pos. | Cod. pezzo | Descrizione |
|-------|---------------|--|
| 170 | 07.06.0823.00 | Round head square neck bolt 8x23 8.8 with Self-locking nut |
| 171,1 | 09.00.0120.40 | Right angle reel bar (13 springs) |
| 171,2 | 09.00.0120.41 | Left angle reel bar (13 springs) |
| 171,3 | 09.00.0120.50 | Right angle reel bar (15 springs) |
| 171,4 | 09.00.0120.51 | Left angle reel bar (15 springs) |
| 171,5 | 09.00.0120.42 | Complete right reel (13 springs) |
| 171,6 | 09.00.0120.43 | Complete left reel (13 springs) |
| 171,7 | 09.00.0120.52 | Complete right reel (15 springs) |
| 171,8 | 09.00.0120.53 | Complete left reel (15 springs) |
| 172,1 | 03.05.0122.00 | Right double spring for side delivery rake |
| 172,2 | 03.05.0122.01 | Left double spring for side delivery rake |
| 173 | 06.02.0123.00 | Spring locking plaque |
| 174 | 07.02.0006.01 | Self-locking nut M 6 |
| 175 | 03.05.1191.01 | Frontal spring locking plaque |
| 176 | 07.07.0616.05 | Hexagonal head screw 6x16 8.8 uni 5739 zinc plated |
| 177,1 | 03.05.1191.00 | Frontal right spring for side delivery rake |
| 177,2 | 03.05.1191.02 | Frontal left spring for side delivery rake |
| 178 | 03.11.0732.01 | Zinc plated elastic pin 7x32 |
| 179 | 01.14.0075.00 | Rear reel support cap |
| 180 | 03.07.2035.00 | Washer 20,5x35x4 |
| 181 | 03.03.6204.02 | Bearing 6204/2RS - 20x47x14 |
| 182 | 07.02.0016.01 | Self-locking nut M 16 |
| 183 | 09.00.0054.05 | Driving crosswise 5 reels oleodinamic |
| 184 | 09.00.0055.05 | 5 holes plate |
| 185 | 03.07.1356.00 | Washer 13x56x8 |

| | | |
|-------|----------------|---|
| 186 | 03.08.0012.03 | Lock washer ø12 DIN 6798j zinc plated |
| 187 | 06.02.0070.00 | Crosswise lock plate |
| 188 | 07.07.1240.05 | Hexagonal head screw 12x40 8.8 uni 5739 zinc plated |
| 189 | 07.07.0810.04 | Hexagonal head screw 8x10 8.8 uni 5739 |
| 190 | 06.02.0125.00 | Zinc plater lock washer |
| 191 | 01.14.0078.00 | Reel support |
| 191,1 | 09.00.0078.00 | Complete reel support |
| 192 | 09.00.0082.00 | Reel support spacer |
| 193 | 09.00.0084.00 | Reel support pin |
| 194 | 06.02.0085.00 | Reel support crowned cap |
| 195 | 03.09.0053.00 | Snap ring WA-SB 53 |
| 196,1 | 11.012.0121.04 | 13 springs right reel plate |
| 196,2 | 11.012.0121.05 | 15 springs right reel plate |
| 196,3 | 11.012.0121.40 | 13 springs left reel plate |
| 196,4 | 11.012.0121.50 | 15 springs left reel plate |
| 197 | 06.02.0091.00 | Crosswise crowned cap |
| 198 | 09.00.1192.00 | Driven crosswise center pin |
| 199 | 03.03.6206.00 | Bearing 6206 - 30x62x16 |
| 200 | 09.00.0094.00 | Crosswise internal spacer |
| 201 | 09.00.0095.05 | Driven crosswise 5 reels |
| 202 | 09.00.0097.00 | Crosswise rear spacer |
| 203 | 06.02.0098.00 | Rear crosswise cap |
| 204 | 03.07.1948.00 | Washer 19x48x6 |
| 205 | 07.01.0018.08 | Castle nut M18 UNI 5594 |

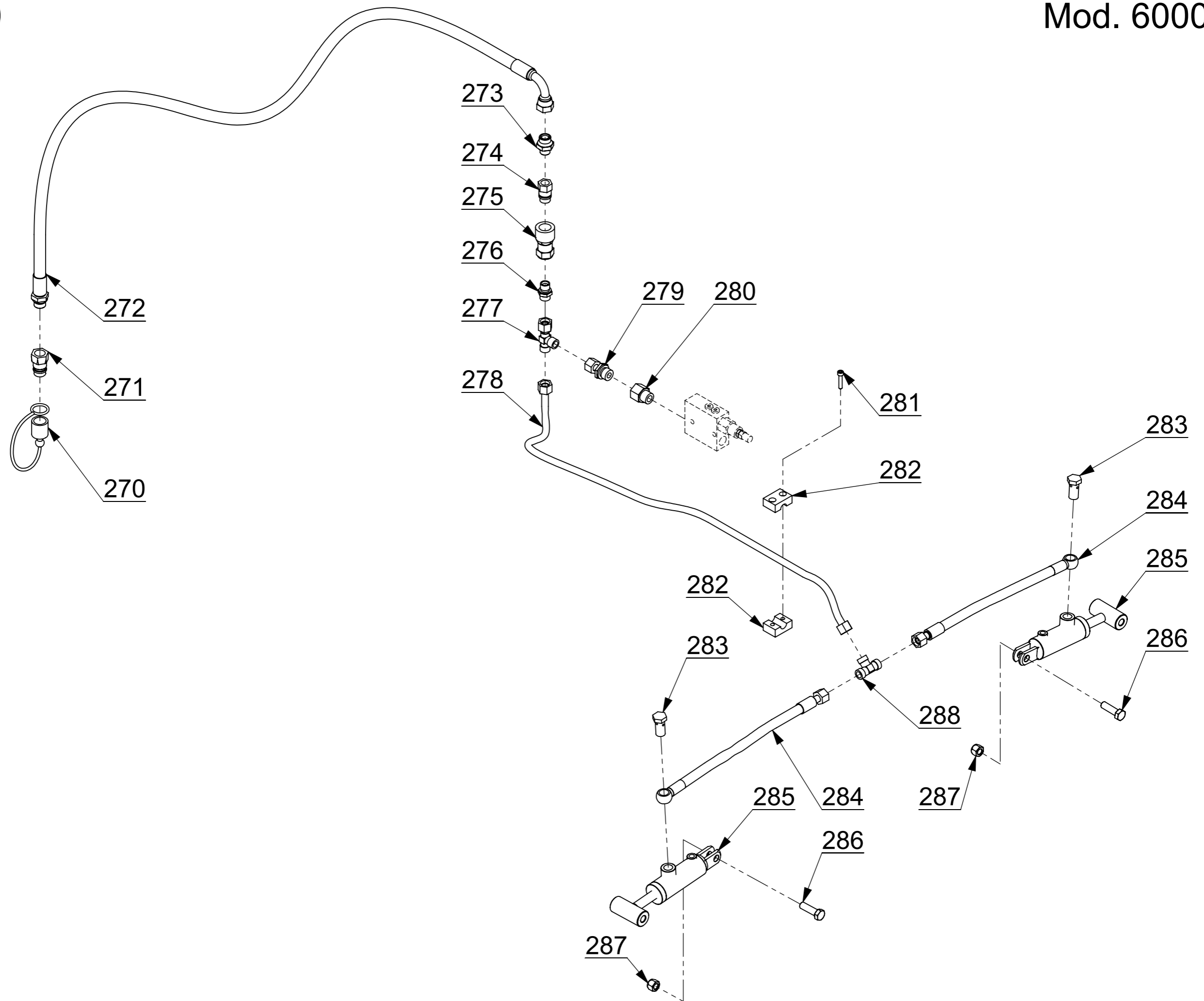


| Pos. | Cod. pezzo | Descrizione |
|-------|---------------|---|
| 210 | 07.07.1480.02 | Hexagonal head screw 14x80 8.8 uni 5737 zinc plated |
| 211 | 09.00.1720.01 | Pump locking bracket |
| 212 | 09.00.1720.02 | Pump locking pin |
| 213 | 04.13.0034.10 | Union elbow Male - Female 3/4" |
| 214 | 04.13.0034.01 | Nipple 3/4" - 3/4" |
| 215 | 04.15.0034.02 | Quick-release coupling female 3/4" |
| 216 | 04.15.0034.01 | Quick-release coupling male 3/4" |
| 217 | 04.13.3412.02 | Nipple 3/4" - 1/2" |
| 218 | 04.13.0100.04 | Pipe fitting Male 1" - Female 3/4" |
| 219,1 | 04.02.0025.01 | Cast iron reversible 25 lt. Pump |
| 219,2 | 04.02.0060.01 | Cast iron reversible 60 lt. Pump |
| 220 | 07.01.0010.04 | Nut M10 UNI 5588 |
| 221 | 03.08.0010.00 | Grower washer ø10 DIN 7980 |
| 222 | 04.02.0002.90 | Fast coupling SER2 for cast iron pump |
| 223 | 07.07.1020.05 | Hexagonal head screw 10x20 8.8 uni 5739 zinc plated |
| 224 | 09.00.1720.04 | Pump attachment support |
| 225 | 07.02.0014.01 | Self-locking nut M 14 |
| 226 | 04.19.2500.00 | Rubber pipe |
| 227 | 04.21.2500.00 | Rubber pipe |
| 228 | 04.13.0012.01 | Nipple 1/2" - 1/2" |
| 229 | 04.15.0012.01 | Quick-release coupling male 1/2" |
| 230 | 04.15.0012.02 | Quick-release coupling female 1/2" |
| 231 | 04.14.0126.15 | Pipe fitting DIN TN 126 - 15 LR |
| 232 | 04.14.0094.15 | Pipe fitting DIN TN 94 - 15 LR |
| 233 | 04.05.0012.04 | Max pressure 1/2" valve |

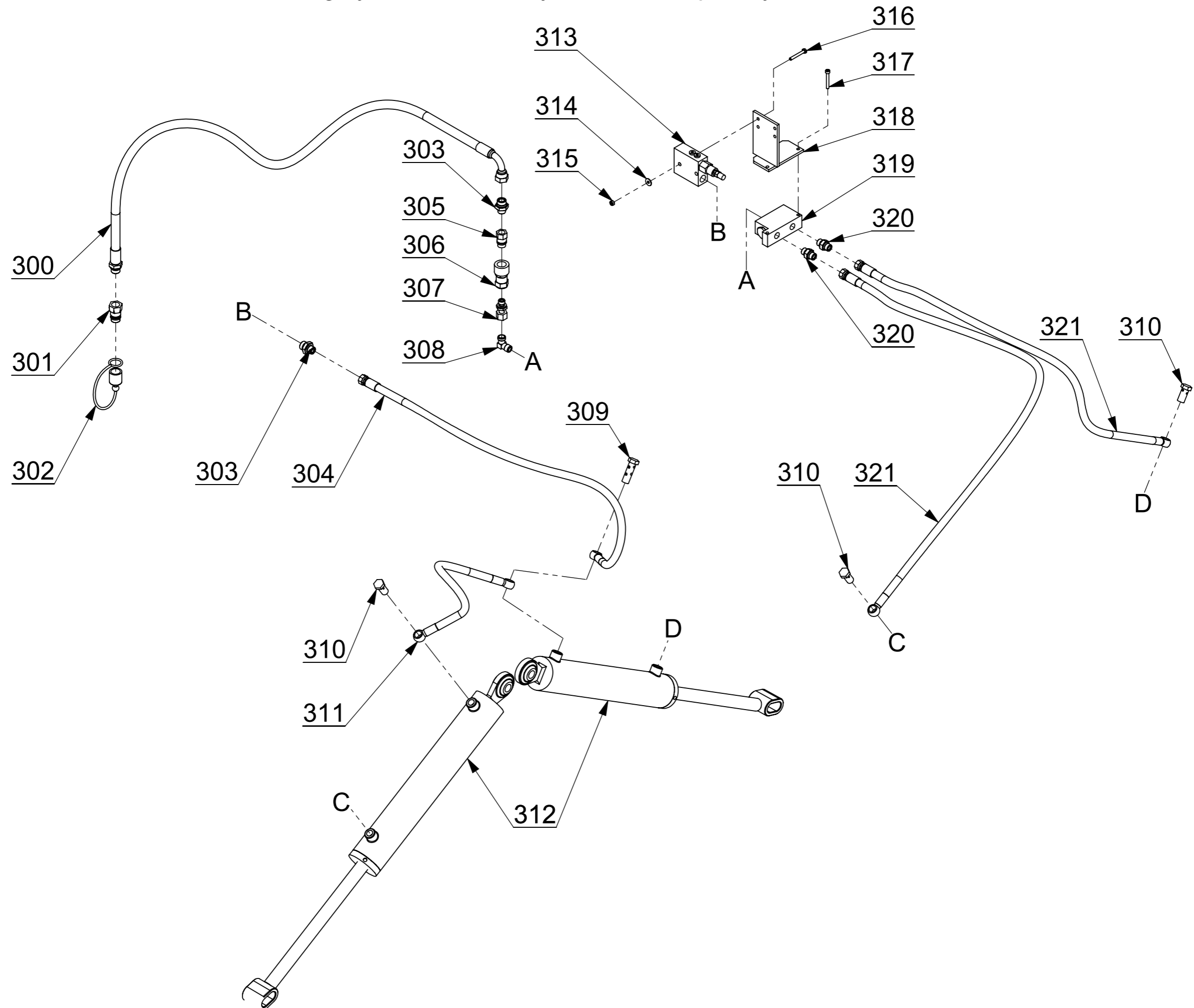
| | | |
|-------|---------------|---|
| 234 | 04.13.0012.06 | Swinging nipple male - female 1/2" |
| 235 | 04.14.0092.22 | Pipe fitting DIN TN 92 - 22 LR |
| 236 | 07.07.1020.05 | Hexagonal head screw 10x20 8.8 uni 5739 zinc plated |
| 237 | 09.00.1907.00 | Hydraulic oil tank |
| 238 | 01.17.0456.01 | Tank double bleed female cap |
| 238,1 | 01.17.0456.04 | Tank male cap with double bleed valve |
| 239 | 01.17.0456.02 | Oil inlet filter |



| Pos. | Cod. pezzo | Descrizione |
|-------------|-------------------|--|
| 250 | 04.14.3492.18 | Pipe fitting DIN TN 92 - 18 LR 3/4" |
| 251 | 09.00.1938.00 | Iron pipe |
| 252 | 04.08.0442.03 | Spin-on filter head |
| 253 | 07.07.0825.05 | Hexagonal head screw 8x25 8.8 uni 5739 zinc plated |
| 254 | 03.06.0817.01 | Washer ø 8 UNI 6592 (8,4x17x1,6) zinc plated |
| 255 | 09.00.3614.00 | Spacer |
| 256 | 04.13.3412.02 | Nipple 3/4" - 1/2" |
| 257 | 04.08.0442.01 | Oil cartridge |
| 258 | 04.14.0092.15 | Pipe fitting DIN TN 92 - 15 LR |
| 259 | 09.00.1933.00 | Iron pipe |
| 260 | 07.03.0630.02 | Socket head screw 6x30 UNI 5931 zinc plated |
| 261 | 04.07.0015.00 | Hold pipe collar C3 15 |
| 262 | 04.13.0012.01 | Nipple 1/2" - 1/2" |
| 262 | 04.19.1370.00 | Rubber pipe |
| 264 | 04.19.3330.00 | Rubber pipe |
| 265 | 04.19.1500.00 | Rubber pipe |



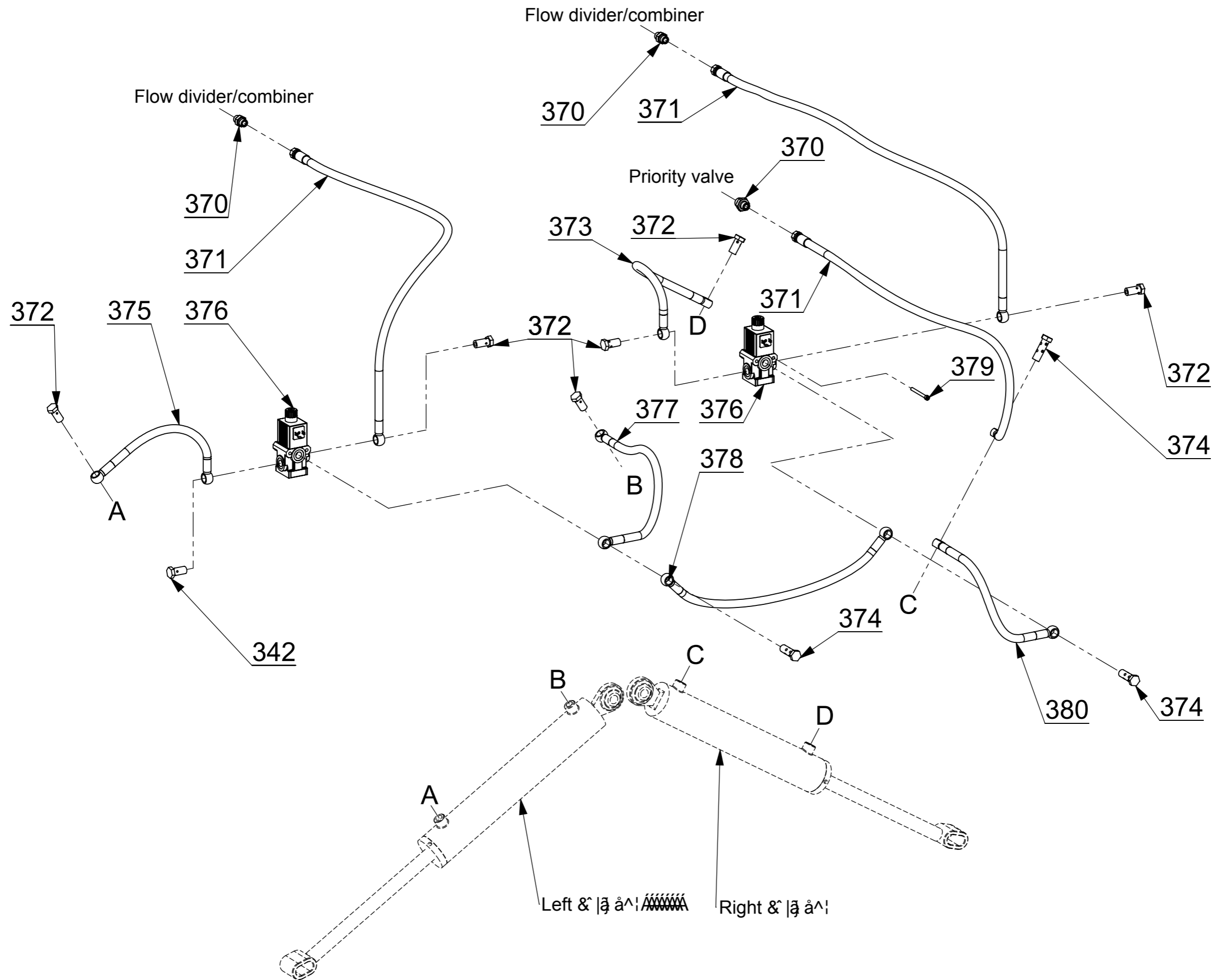
| Pos. | Cod. pezzo | Descrizione |
|-------------|-------------------|---|
| 270 | 04.15.0012.04 | Cover for quick-release coupling male 1/2" |
| 271 | 04.15.0012.01 | Quick-release coupling male 1/2" |
| 272 | 04.19.2500.00 | Rubber pipe |
| 273 | 04.13.1238.02 | Nipple 1/2" - 3/8" |
| 274 | 04.15.0038.01 | Quick-release coupling male 3/8" |
| 275 | 04.15.0038.02 | Quick-release coupling female 3/8" |
| 276 | 04.14.0092.12 | Pipe fitting DIN TN 92 - 12 LR |
| 277 | 04.14.0121.12 | Pipe fitting DIN TN 121 - 12 L (body) |
| 278 | 09.00.1935.00 | Iron pipe |
| 279 | 04.14.0126.12 | Pipe fitting DIN TN 126 - 12 LR |
| 280 | 04.13.1238.04 | Pipe fitting Male 1/2" - Female 3/8" |
| 281 | 07.03.0630.02 | Socket head screw 6x30 UNI 5931 zinc plated |
| 282 | 04.07.0012.00 | Hold pipe collar C2 12 |
| 283 | 04.13.0038.03 | Hollow screw 3/8" |
| 284 | 04.18.0420.02 | Rubber pipe |
| 285 | 04.09.0026.01 | Simple effect cylinder for safety hook |
| 286 | 07.07.1240.04 | Hexagonal head screw 12x40 8.8 uni 5739 |
| 287 | 07.02.0012.01 | Self-locking nut M 12 |
| 288 | 04.14.0100.12 | Pipe fitting DIN TN 100 - 12 L |



| Pos. | Cod. pezzo | Descrizione |
|-------------|-------------------|--|
| 300 | 04.19.2500.01 | Rubber pipe |
| 301 | 04.15.0012.01 | Quick-release coupling male 1/2" |
| 302 | 04.15.0012.04 | Cover for quick-release coupling male 1/2" |
| 303 | 04.13.1238.02 | Nipple 1/2" - 3/8" |
| 304 | 04.18.1100.01 | Rubber pipe |
| 305 | 04.15.0038.01 | Quick-release coupling male 3/8" |
| 306 | 04.15.0038.02 | Quick-release coupling female 3/8" |
| 307 | 04.14.0126.12 | Pipe fitting DIN TN 126 - 12 LR |
| 308 | 04.14.0094.12 | Pipe fitting DIN TN 94 - 12 LR |
| 309 | 04.13.1038.03 | Double hollow screw 3/8" |
| 310 | 04.13.0038.03 | Hollow screw 3/8" |
| 311 | 04.18.0450.01 | Rubber pipe |
| 312 | 04.09.0017.02 | Double effect cylinder for raking group |
| 312,1 | 04.09.0003.90 | Cylinder gasket kit |
| 313 | 04.05.0012.00 | priority valve |
| 314 | 03.06.0618.01 | Washer ø 6 UNI 6593 (6,2x18x1,6) zinc plated |
| 315 | 07.01.0006.05 | Nut M6 UNI 5588 zinc plated |
| 316 | 07.07.0645.02 | Hexagonal head screw 6x45 8.8 uni 5737 zinc plated |
| 317 | 07.03.0654.02 | Socket head screw 6x45 UNI 5931 zinc plated |
| 318 | 09.00.1952.00 | Priority valve support |
| 319 | 04.18.1300.03 | Rubber pipe |
| 319 | 04.05.3811.01 | Flow divisor |
| 320 | 04.13.0038.01 | Nipple 3/8" - 3/8" |

| Pos. | Cod. pezzo | Descrizione |
|-------------|-------------------|--------------------------------|
| 330 | 04.13.0038.01 | Nipple 3/8" - 3/8" |
| 331 | 04.18.1100.01 | Rubber pipe |
| 332 | 04.13.0038.03 | Hollow screw 3/8" |
| 333 | 04.18.0450.00 | Rubber pipe |
| 334 | 04.13.1038.03 | Double hollow screw 3/8" |
| 335 | 04.18.0650.03 | Rubber pipe |
| 336 | 04.05.3801.03 | Single overcentre valve |
| 337 | 04.14.0094.12 | Pipe fitting DIN TN 94 - 12 LR |
| 338 | 09.00.1936.00 | Iron pipe |
| 339 | 04.14.0038.12 | Pipe fitting 12 - Eye 3/8" L |
| 340 | 09.00.1937.00 | Iron pipe |

| Pos. | Cod. pezzo | Descrizione |
|-------------|-------------------|---------------------------------|
| 350 | 04.13.0038.01 | Nipple 3/8" - 3/8" |
| 351 | 04.18.1100.01 | Rubber pipe |
| 352 | 04.13.0038.03 | Hollow screw 3/8" |
| 353 | 04.13.1038.03 | Double hollow screw 3/8" |
| 354 | 04.18.0400.03 | Rubber pipe |
| 355 | 09.00.1935.01 | Iron pipe |
| 356 | 04.14.0094.12 | Pipe fitting DIN TN 94 - 12 LR |
| 357 | 04.05.0338.06 | Three-way 3/8" cock |
| 358 | 04.14.0038.12 | Pipe fitting 12 - Eye 3/8" L |
| 359 | 04.14.0127.12 | Pipe fitting DIN TN 127 - 12 LR |
| 360 | 09.00.1937.01 | Iron pipe |



| Pos. | Cod. pezzo | Descrizione |
|-------------|-------------------|---|
| 370 | 04.13.0038.01 | Nipple 3/8" - 3/8" |
| 371 | 04.18.1100.01 | Rubber pipe |
| 372 | 04.13.0038.03 | Hollow screw 3/8" |
| 373 | 04.18.0480.00 | Rubber pipe |
| 374 | 04.13.1038.03 | Double hollow screw 3/8" |
| 375 | 04.18.0350.02 | Rubber pipe |
| 376 | 04.05.0312.07 | Solenoid 3 way valve (12 V DC) |
| 377 | 04.18.0450.01 | Rubber pipe |
| 378 | 04.18.0650.03 | Rubber pipe |
| 379 | 06.03.0670.02 | Socket head screw 6x70 UNI 5931 zinc plated |
| 380 | 04.18.0370.00 | Rubber pipe |